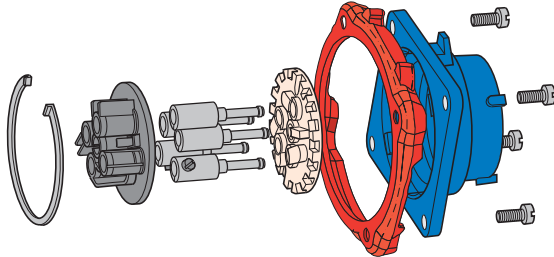


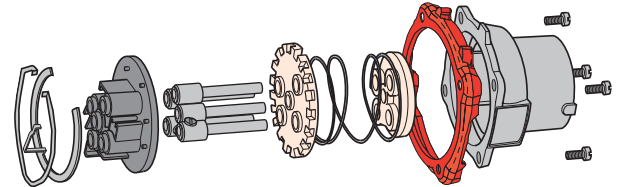


# Spare Parts Male Configuration

PN pictured



DN pictured



PN7	POLY	METAL
Plug Interior, Ground Contact & Connection	09-PA910	09-PA910
Plug Contact	09-PA911	09-PA911
Device Gasket	61-1AM26	61-1AM26
Plug Casing	01-NA014	09-NA014
Ground Contact	09-PA919	09-PA919

PN12	POLY	METAL
Plug Interior, Ground Contact & Connection	09-MA910	09-MA910
Plug Contact	01-MA911	01-MA911
Device Gasket	61-1AM26	61-1AM26
Plug Casing	01-NA014	09-NA014
Ground Contact	09-MA919	09-MA919

DSN24/37	24 POLY	37 POLY
Plug Interior	31-1A910	31-3A910
Plug Contact	31-1A911	31-1A911
Plug Casing	61-3A014	61-6A014
Device Gasket	61-3AM26	31-3AM26

DN9/20	9 METAL	20 METAL
Plug Interior	19-1A910	19-6A910
Plug Contact (Short/Outside)	19-1A911	19-6A911
Plug Contact (Long/Inside)	19-1A711	19-6A711
Plug Casing	19-1A014	19-6A014
Device Gasket	31-3A026	31-9A026

DS7/DR7	POLY	METAL
Plug Casing	31-6A014	39-6A014
Plug Phase Contact	31-3A911	31-3A911
Plug Pilot Contact	31-3A911-172	31-3A911-172
Plug Interior	31-3A910-263	31-3A910-263
Device Gasket	31-6AM26	31-6AM26
Ground Contact	31-3A919	31-3A919

DN7	50 METAL	90 METAL	150 METAL
Plug Casing	19-3A014	19-6A014	39-2A014
Plug Phase Contact	19-3A011-777	19-6A011-777	19-9A011-777
Plug Ground Contact	19-3A019-777	19-6A019-777	19-9A019-777
Plug Interior	19-3A010-777	19-6A010-777	19-9A010-777
Device Gasket	31-6A026	31-9A026	39-2A026